

Electrical heat 300-900 W

18 models



Thermoplus

Radiant heater moulding for indoor use

Radiant heater moulding Thermoplus has several advantages over conventional radiators. Thermoplus is mounted above the window. Since it is mounted above the window instead of below, it is appropriate for example in rooms used by children. Thermoplus also provide excellent protection against cold draught from windows. Thermoplus mainly emits radiant heat, which gives high heating comfort and saves energy.

Thermoplus is available in three versions:

- Type EC, for dry rooms. Controlled by a separate thermostat or output regulator.
- ECVT, for wet rooms. With a built-in cord switch and thermostat.
- ECV, for wet rooms. Primarily designed for connection as slave device to ECVT, but can also be regulated separately using the same methods as for EC.

- Mounted above instead of below the window.
- Front panel of white scratch-resistant enamelled aluminium. Colour: RAL 9010. Rear panel of hot zinc-plated steel panels.
- Brackets for wallmounting are included. Fixtures for ceiling mounting are extra.
- Cable entry on the left side seen from the front.



Above a window is a common and practical positioning.

Radiant Heater Thermoplus



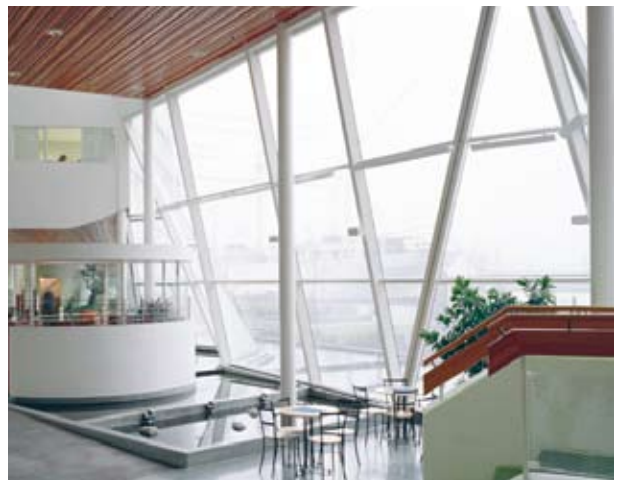
Center d'affaires du Trocadéro, Paris. In this office space of 30.000 m² there are 650 Thermoplus to ensure that people working close to numerous windows are comfortable even on the coldest days.



The summer lasts longer with a glassed-in open-air café. Thermoplus solves cold draughts problems near the windows and provides a comfortable indoor temperature.



Thermoplus is installed across the arch in this store and heats even this proportionately large volume.



In the lobby of one of Göteborg's most well-known office buildings, Thermoplus is used for preventing cold draughts. The radiant heat moulding is very discreet as it is positioned high up along a beam.



Thermoplus is a perfect complement to the total heating of a room. The staff in this office is protected from the cold draughts from the windows.



Thermoplus radiant heat moulding is an excellent alternative to radiators and provides a good heat dispersion.

Radiant Heater Thermoplus

Technical specifications | Thermoplus EC. For dry rooms.

Type	Heat output [W]	Voltage [V]	Dimensions LxHxD [mm]	Bracket distance [mm]	Surface temperature [°C]	Weight [kg]
EC45021	450	230V~	1076x100x90	600	180	2.6
EC45031	450	400V~	1076x100x90	600	180	2.6
EC60021	600	230V~	1505x100x90	900	180	3.7
EC60031	600	400V~	1505x100x90	900	180	3.7
EC75021	750	230V~	1810x100x90	1200	180	4.4
EC75031	750	400V~	1810x100x90	1200	180	4.4
EC90021	900	230V~	2140x100x90	1800	180	4.8
EC90031	900	400V~	2140x100x90	1800	180	4.8

Protection class Thermoplus EC: (IP20) normal design.

Approved by SEMKO and CE compliant.

Technical specifications | Thermoplus ECVT. For wet rooms. Built-in thermostat, electric switch, signal lamp.

Type	Heat output [W]	Voltage [V]	Dimensions LxHxD [mm]	Bracket distance [mm]	Surface temperature [°C]	Weight [kg]
ECVT30021	300	230V~	870x100x90	400	180	2.6
ECVT55021	550	230V~	1505x100x90	900	180	4.3
ECVT55031	550	400V~	1505x100x90	900	180	4.3
ECVT70021	700	230V~	1810x100x90	1200	180	5.0
ECVT70031	700	400V~	1810x100x90	1200	180	5.0

Protection class Thermoplus ECVT: (IP44) splash-proof design.

Approved by SEMKO and CE compliant.

Technische daten | Thermoplus ECV. For wet rooms. Connected as slave device to ECVT.

Type	Heat output [W]	Voltage [V]	Dimensions LxHxD [mm]	Bracket distance [mm]	Surface temperature [°C]	Weight [kg]
ECV30021	300	230V~	870x100x90	400	180	2.3
ECV55021	550	230V~	1505x100x90	900	180	4.0
ECV55031	550	400V~	1505x100x90	900	180	4.0
ECV70021	700	230V~	1810x100x90	1200	180	4.7
ECV70031	700	400V~	1810x100x90	1200	180	4.7

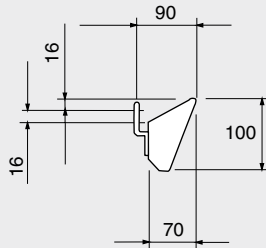
Protection class Thermoplus ECV: (IP44) splash-proof design.

Approved by SEMKO and CE compliant.

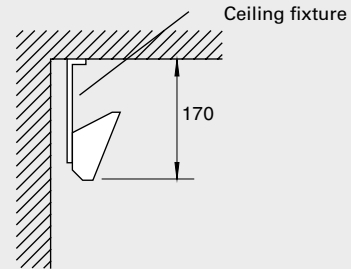
230V~ models are in addition approved by Det Norske Veritas.

Dimensions

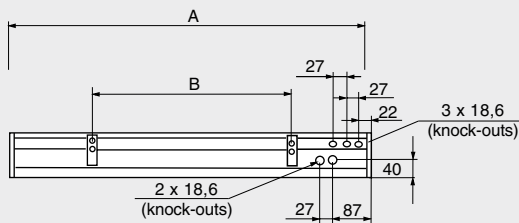
Mounting on the wall



Mounting on the ceiling

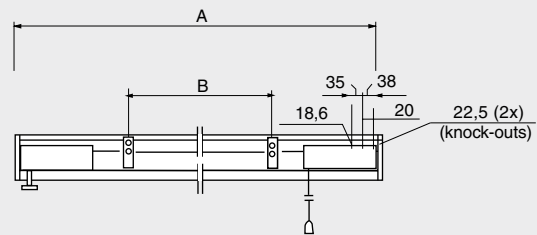


Type EC



Type	A [mm]	B [mm]
EC450	1076	600
EC600	1505	900
EC750	1810	1200
EC900	2140	1800

Type ECV, ECVT



Type	A [mm]	B [mm]
ECV(T)300	870	400
ECV(T)550	1505	900
ECV(T)700	1810	1200

Positioning, mounting and installation

Mounting

Thermoplus among other things is used to protect against cold draughts from windows and is mounted above the window. In comparison to conventional radiators, Thermoplus is mounted above instead of below the window and is thus especially suitable for areas where there are children.

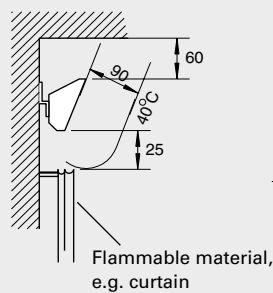
Two wall mounting brackets are included as standard. For minimum mounting distance, see Fig. 1.

Fixtures for ceiling mounting are extra, TF1. For minimum mounting distance, see Fig. 1.

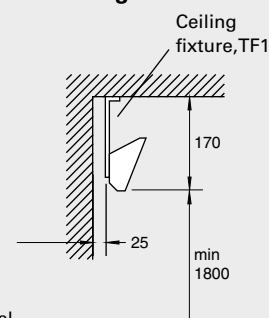
Connection

Thermoplus is intended for permanent installation. There is a 5-poled plinth (4x6 mm² + earth) in the terminal box which allows bridge connection. Several Thermoplus can be connected to one thermostat or electric heating regulator. ECVT has a built-in thermostat. ECV can be connected as a slave device to ECVT, maximum 3600W at 230V~ or 4000W at 400V~.

Mounting on the wall



Mounting on the ceiling



	Min.distance [mm]
Ceiling	60
Wall, long side of the unit	25
Flammable material	25
Floor	1800

Fig. 1: Minimum mounting distance.

Radiant Heater Thermoplus

Regulation options

Type EC is controlled by a separate thermostat or output regulator. ECVT has a built-in cord switch and thermostat. ECV is primarily designed to be a slave connected to ECVT, but can also be regulated separately using the same methods as for EC.

Thermoplus is easily regulated with electric heating regulator ERP or for a more inexpensive solution a Frico room thermostat can be chosen.

Accessories



RTE102/104

RTE102, electronic thermostat

Can control the heat directly or via contactor when larger loads need to be controlled. Internal temperature setting +7 – +35°C. Delivered with covering frame for recessed installation. Required connection voltage: 230V. Protection class: IP30.

RTE104, electronic thermostat

Can control the heat directly or via contactor when larger loads need to be controlled. Internal temperature setting +7 – +35°C. Delivered with covering frame for recessed installation. Required connection voltage: 400V. Protection class: IP30.

ERP, electric heating control

ERP is a modern, variable control that adapts the energy use exactly to the demand and allows for full use of the advantages with radiant heating. The result is a warm heat and more energy efficient use. For use on 230V and 400V2~ (not 3-phase loads). Load 3600/6400 W. Slave unit ERPS can be used with larger outputs (ERPS handles the same outputs as ERP). Protection class: IP20.



ERP

TF1, fixture for ceiling mounting

To mount Thermoplus on the ceiling.

OS1/2, protection net

The protection net prevents direct contact with the top of the heater and is of galvanized thread net. It is braced between the wall and the heater. Available in two lengths: 1070 and 1500 mm.

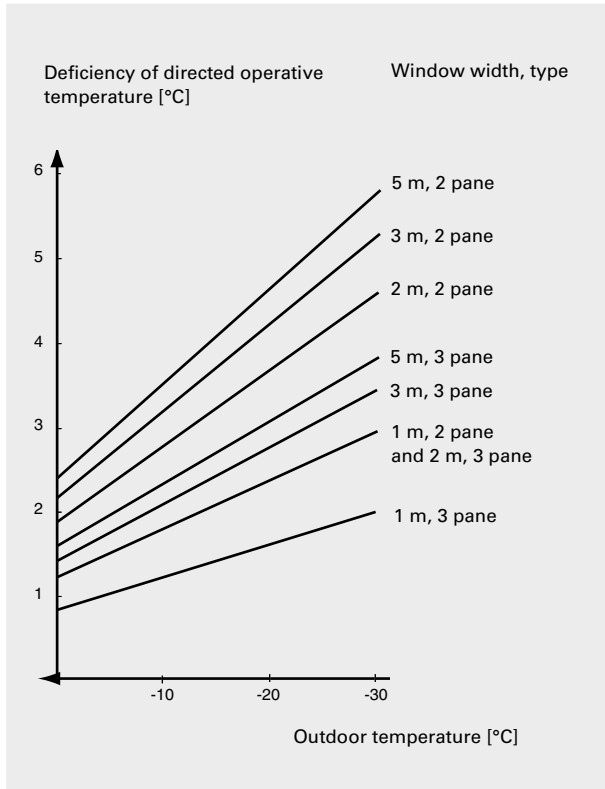
CIRT, variable output control with timer

CIRT is a variable output control with timer, primarily intended for infrared heaters and other radiant heaters. Especially suited for spot and zone heating. The heat contribution is regulated for best comfort (25-100%). Built-in timer that can be set on 30 minutes to 4 hours or 4 to 24 hours respectively. For use on 230V and 400V2~ (not 3-phase loads). Load 3500/6000W. Protection class: IP44.

For further options, see section on Thermostats and Regulators.

Type	Description	HxWxD [mm]
RTE102	Electronic thermostat	71x71x28
RTE104	Electronic thermostat	71x71x28
ERP	Electric heating control	153x93x40
ERPS	Electric heating control (slave controlled)	153x93x40
TF1	Fixture for ceiling mounting	
OS1	Protection net 1070 mm	L: 1070
OS2	Protection net 1500 mm	L: 1500
CIRT	Variable output control with timer	155x87x43

Effect on the temperature near windows

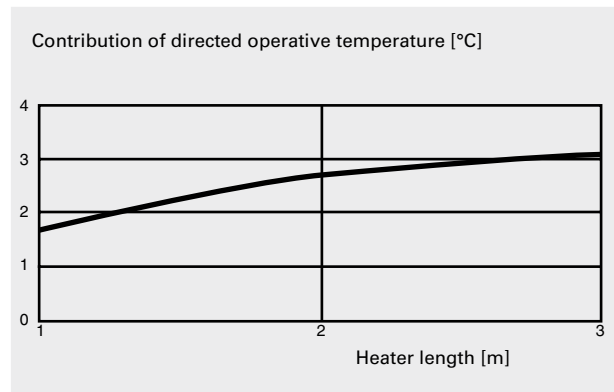


Temperature differentials

The diagram to the left refers to temperature loss through a window that is 1.7 metre high and is measured 1.0 metre into the room from the centre of the window.

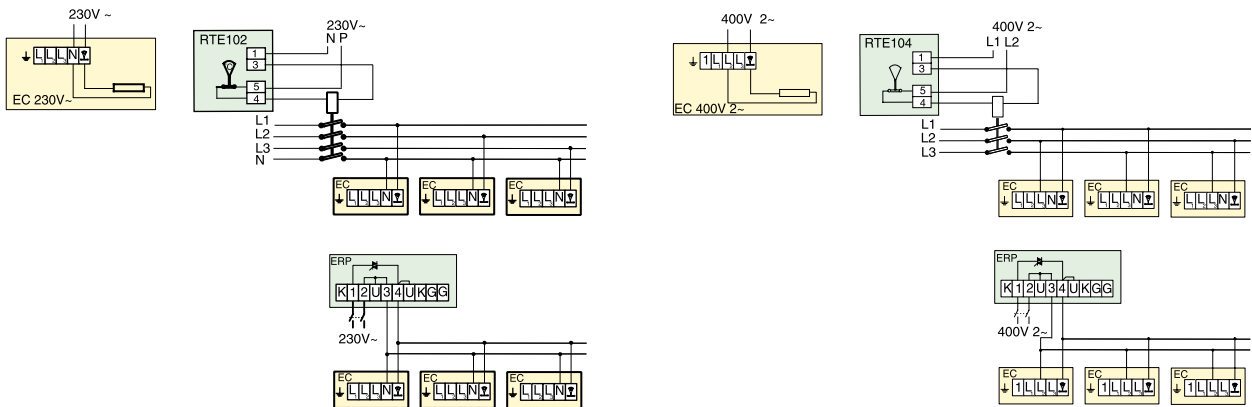
Heat contribution

The contribution to operative temperature is measured at a ceiling height of 2.4 metres, one meter into the room from the centre of the window.



Wiring diagrams Thermoplus

Regulation with thermostat RTE(V) or electric heating regulator ERP.



Regulation with ECVT with built-in thermostat. ECV can be connected as slave device to ECVT.

